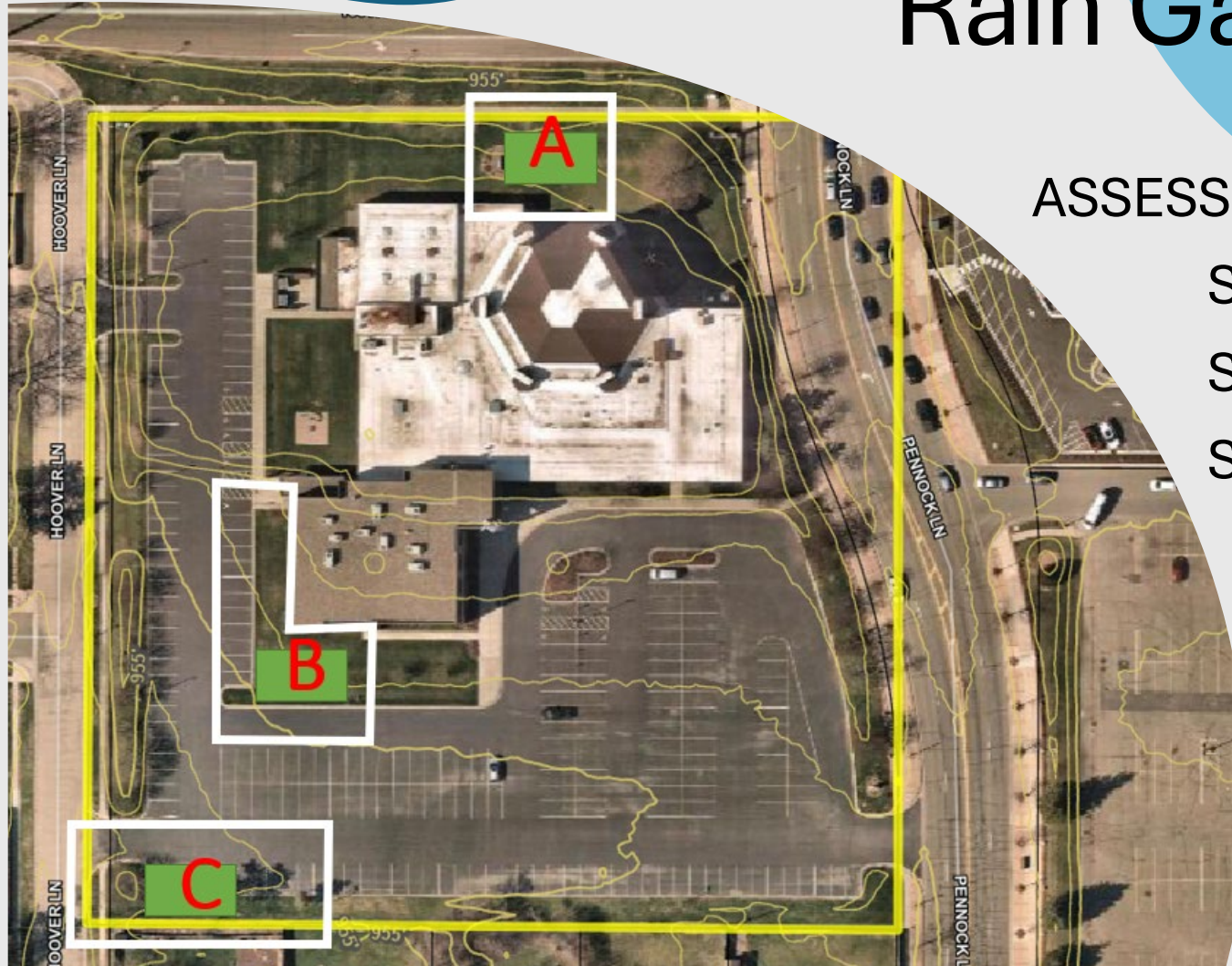




# Grace Lutheran Rain Garden

## A Stormwater Management Solution

# Rain Garden Planning



ASSESSED SITE FOR BEST LOCATIONS

STORMWATER RUNOFF VOLUME

STORMWATER RUNOFF DIRECTION

SOLVE EXISTING SITE ISSUES

# Location 'A' Existing Site Conditions:

Water-logged area

Frost-heaving

Pad drains water towards building





# Rain Garden Design

MITIGATE SOIL SATURATION IN AREA  
MANAGEABLE SIZE TO INSTALL  
MANAGEABLE SIZE TO MAINTAIN  
SUPPORT POLLINATORS



# Cost Considerations

**LOCATION A: \$11,200**

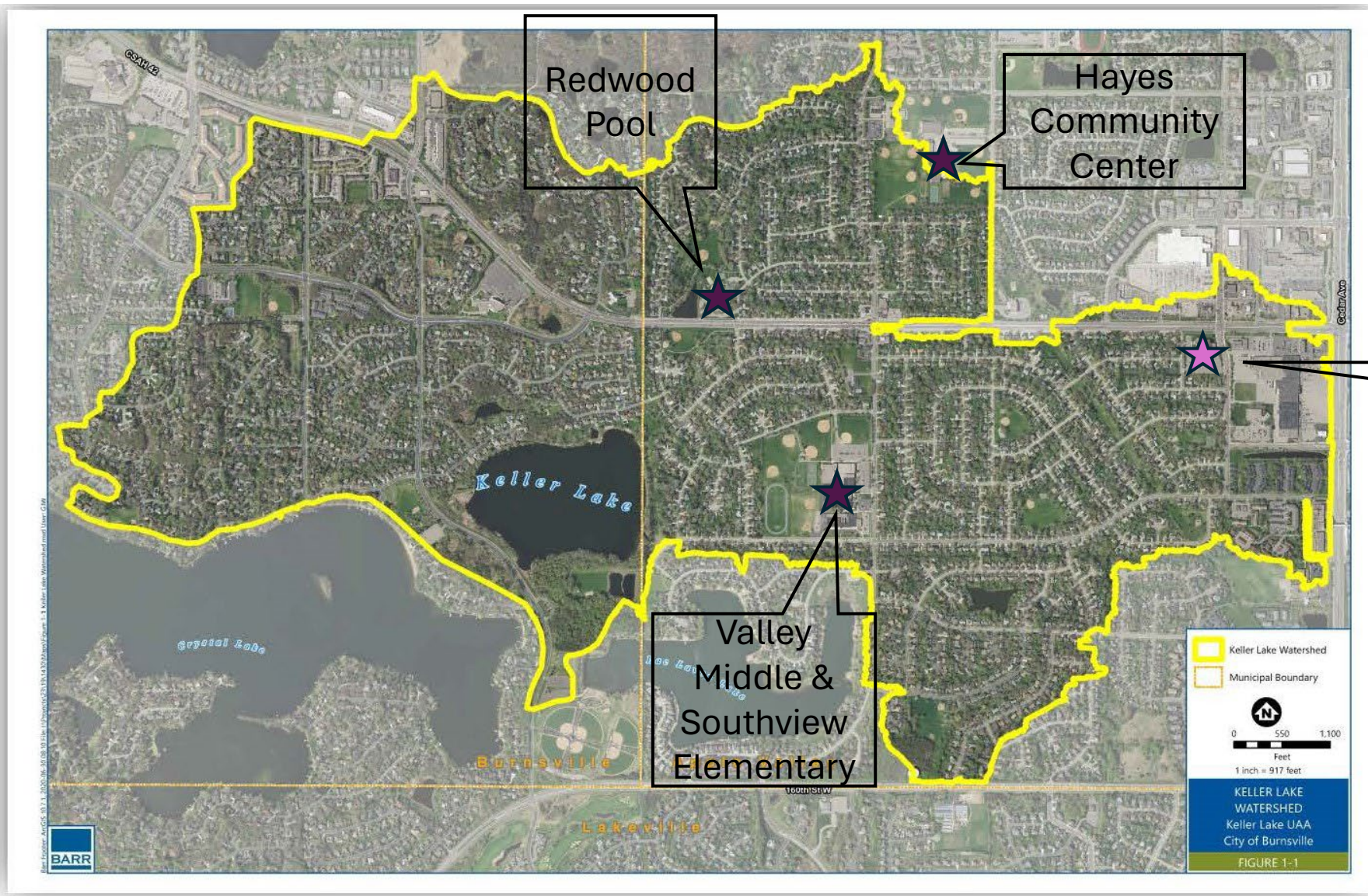
LOCATION B: \$40,000

LOCATION C: \$50,000

85% COST SHARE (\$9,520) BY  
DAKOTA COUNTY SOIL & WATER CONSERVATION DISTRICT  
15% COST TO GRACE LUTHERAN  
(\$1,680 INCLUDING IN-KIND)

# protecting water health in Keller Lake Watershed





*The yellow boundary outlines the Keller Lake Watershed. Rainwater that falls within that boundary drains to Keller Lake through storm pipes.*





# Rain Gardens

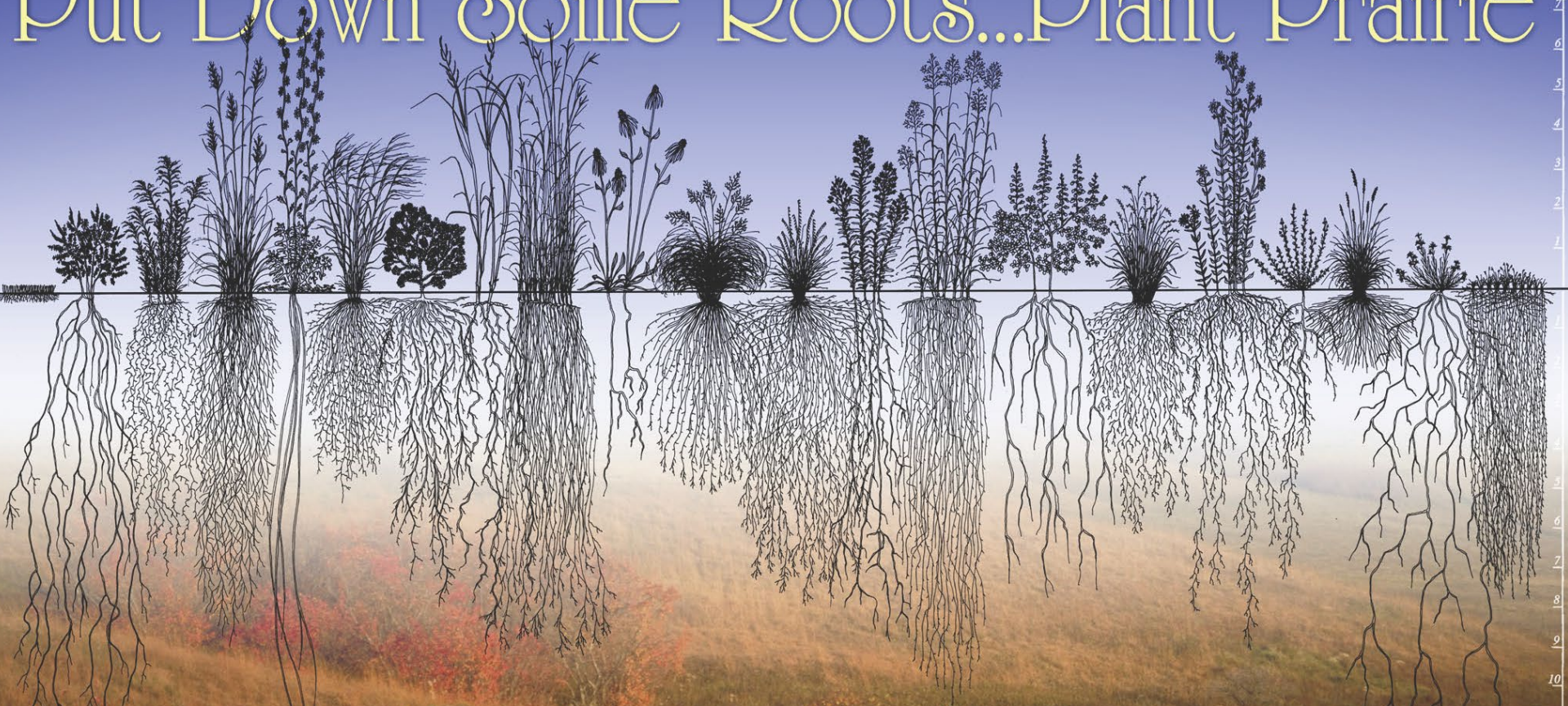
STORMWATER MANAGEMENT  
BEST PRACTICE



the power of native plants



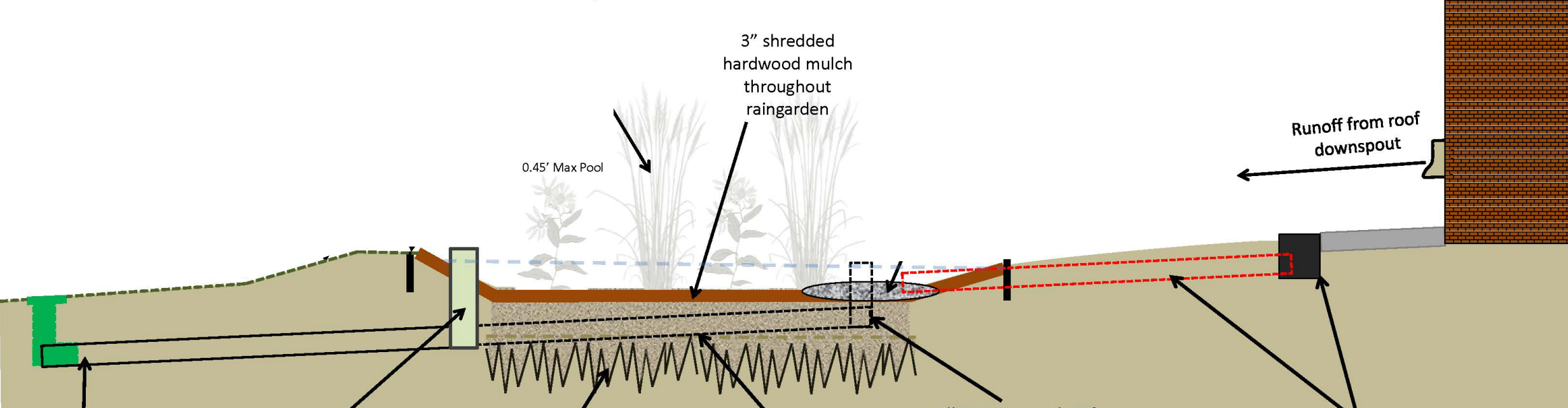
# Put Down Some Roots...Plant Prairie



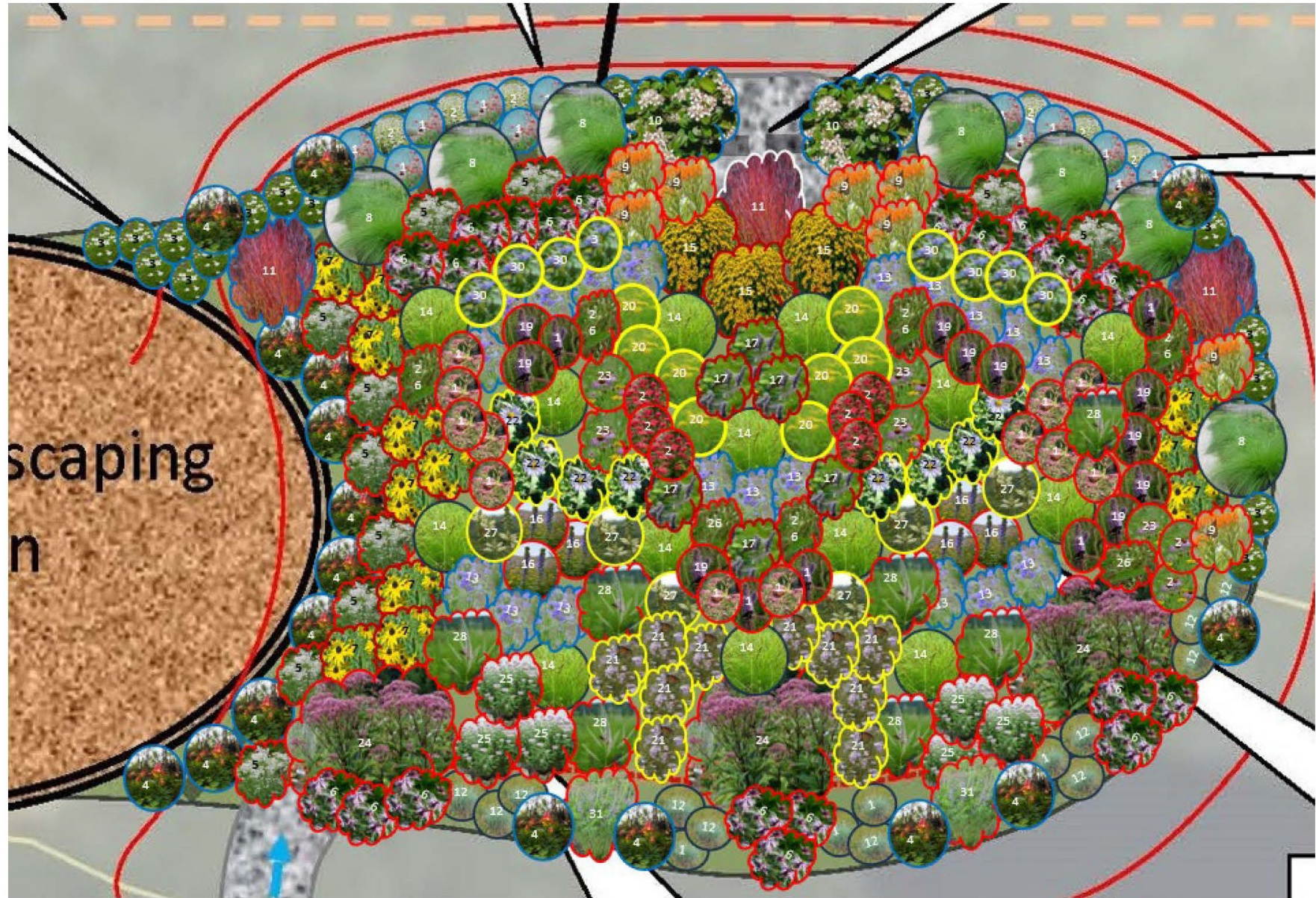
**Improve water quality • Anchor soil • Provide wildlife habitat • Sequester carbon**

Native tallgrass prairie is the most endangered ecosystem in North America

# Rain Garden Cross Section



# Planting Plan



## project schedule

May 4<sup>th</sup> – sod removal

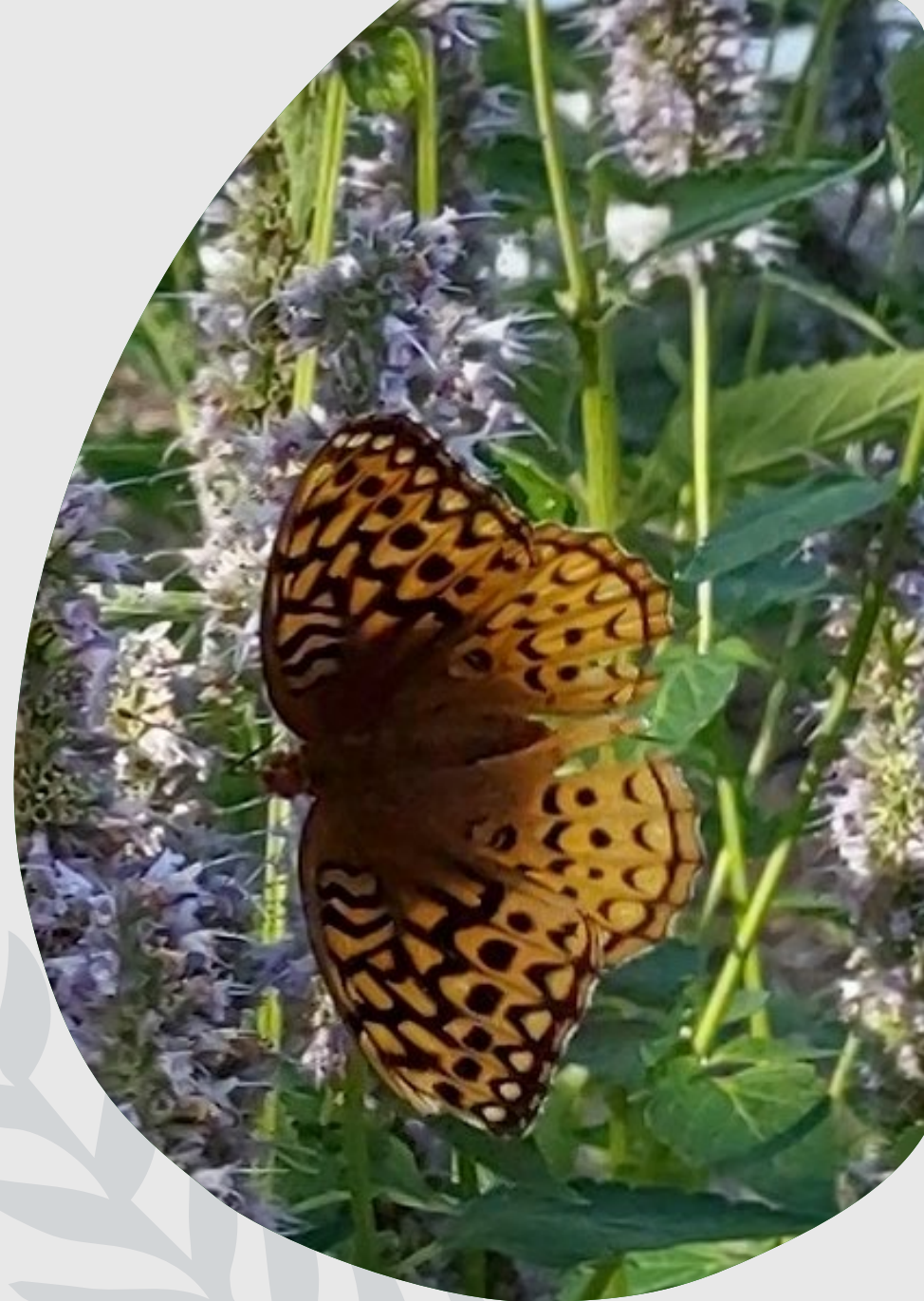
May 5<sup>th</sup> – soil removal

May 11<sup>th</sup> – install paver edging & build berm

May 18<sup>th</sup> – install engineered soil

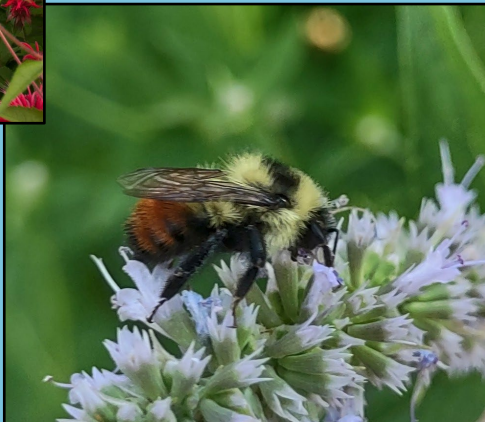
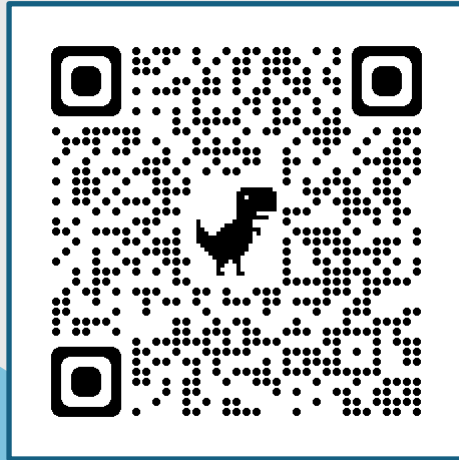
June 1 – install hardwood mulch

June 8 – planting day



# Volunteers Needed – sign up today!

<https://www.signupgenius.com/go/10C0B48A5A82AA7FFC34-48774117-rain>





thank you

GRACE LUTHERAN GREEN TEAM  
RAIN GARDEN VOLUNTEERS  
DAKOTA COUNTY SWCD  
APPLE VALLEY ECO ADVOCATES  
MINNESOTA FRESHWATER SOCIETY